

J: Access

In a 2001-2 survey, more households without a car reported access difficulties to amenities than those who had a car - 47 per cent had difficulty getting to a hospital, compared with 26 per cent with a car. By 2000, 86 per cent of rural parishes had no GP based in the parish, 71 per cent had no general store, 46 per cent no post office and 76 per cent no daily bus service.

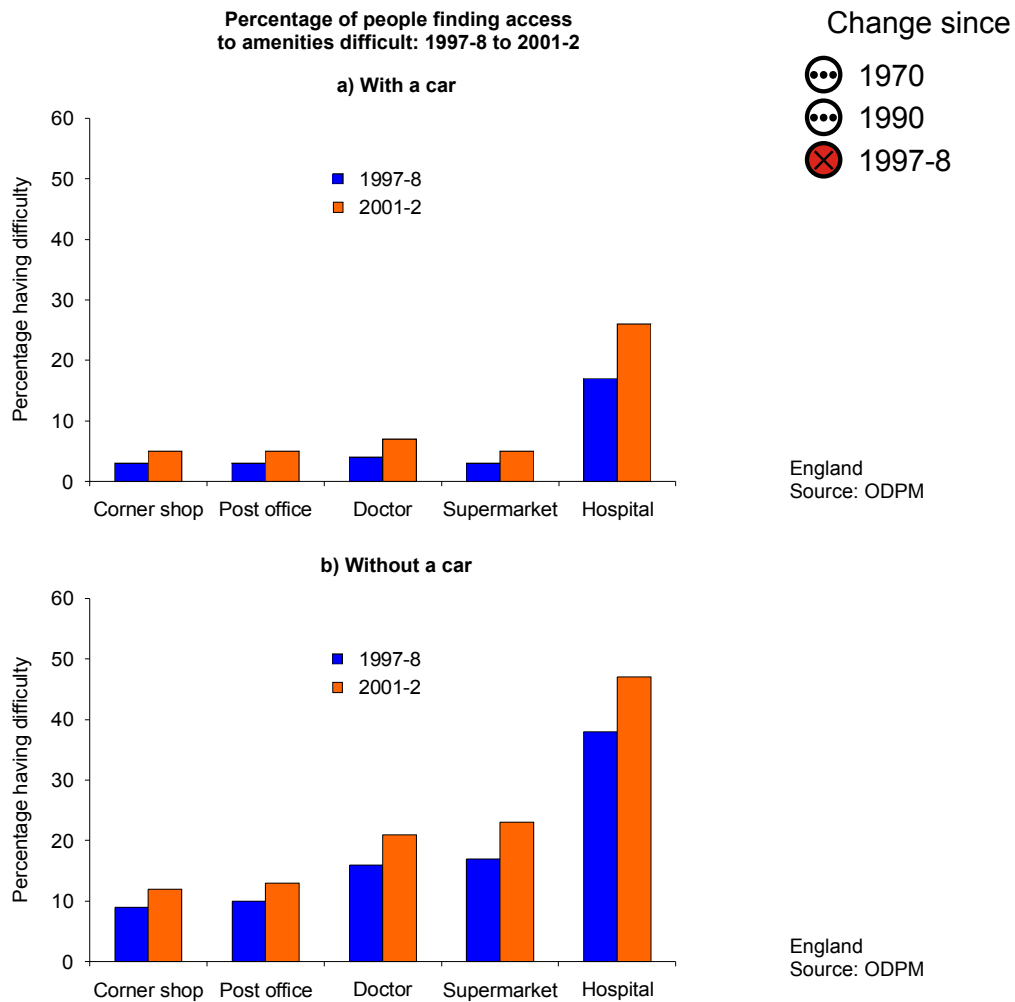
In a 2001 survey of disabled people, 16 per cent had difficulty going shopping, and 10 per cent difficulty going to a cinema, pub or restaurant. The proportions with difficulty accessing goods and services had changed little since 1996.

The number of households in temporary accommodation in England had risen to 94,000 by 2003. The number of 'fuel poor' households fell by around 60 per cent between 1996 and 2001.

Ref. no.	Indicator	QOLC 1999		QOLC Updated Assessment		
		Change since		Change since		
		1970	1990	1970	1990	Strategy
J1	People finding access difficult	☹	☹	☹	☹	☹
J2	Access to services in rural areas	☹	≈	☹	☹	☹
J3	Access for disabled people	☹	☹	☹	☹	≈
J4	Participation in sport and cultural activities	☹	≈	☹	☹	☹
H7	Housing: Households living in non-decent housing (headline)	☹	≈	☹	✓	✓
J5	Temporary accommodation	☹	≈	☹	☹	☹
	Rough sleepers	☹	✓	☹	✓	✓
J6	Fuel poverty	☹	✓	☹	✓	✓

Indicator: People finding access difficult

J1

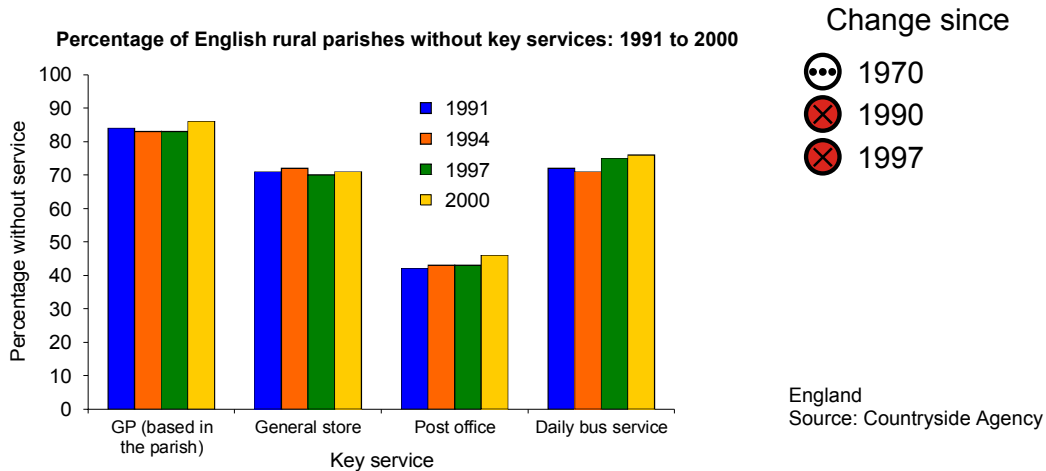


Objective: Need better access to services

- In a 2001-2 survey, more households without a car reported access difficulties to amenities than those who had a car - 47 per cent had difficulty getting to a hospital, compared with 26 per cent with a car.
- Compared with 1997-8, 9 per cent more households said that access to hospitals was difficult, with or without a car, and households with difficulties accessing supermarkets without a car increased from 17 to 23 per cent.

Indicator: Access to services in rural areas

J2

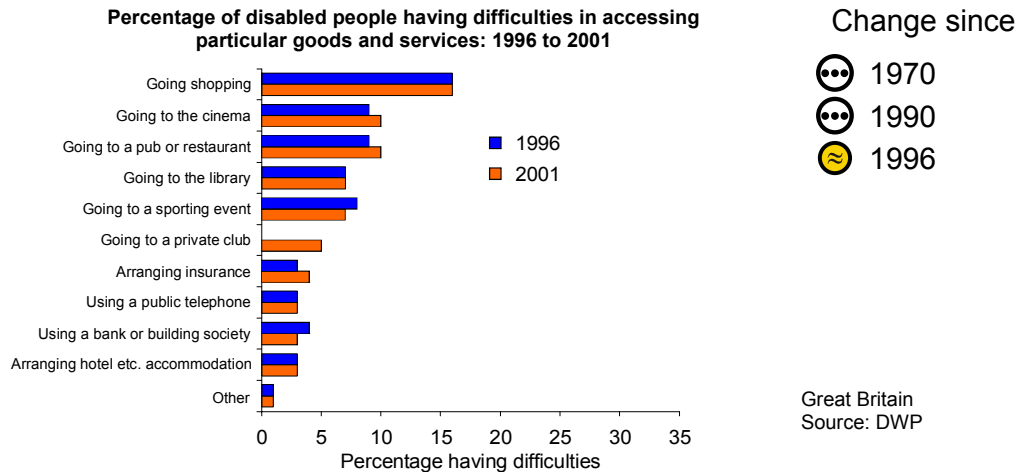


Objective: Need better access to services

- Between 1991 and 2000, 4 per cent of rural parishes lost their post office (3 per cent since 1997); 2 per cent lost their GP (3 per cent since 1997, after a 1 per cent gain); 4 per cent lost a daily bus service (1 per cent since 1997).
- By 2000, 86 per cent of rural parishes had no GP based in the parish, 71 per cent had no general store, 46 per cent no post office and 76 per cent no daily bus service.

Indicator: Access for disabled people

J3

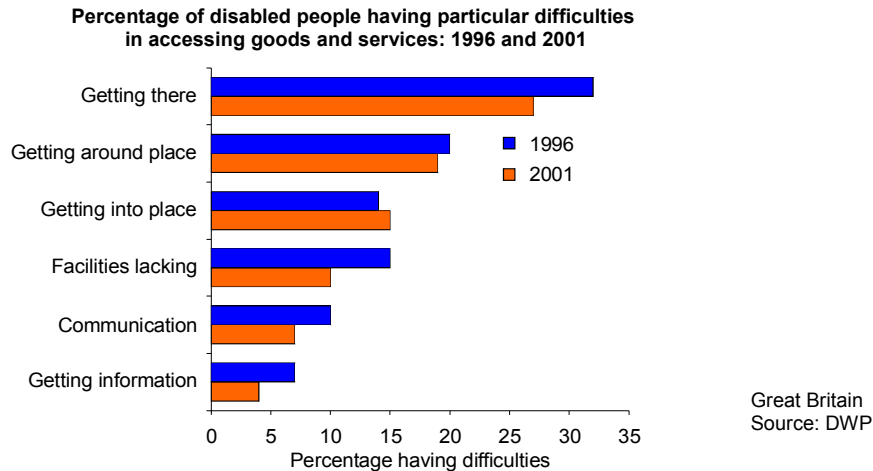


Objective: Ensure that disabled people have access to a wider range of goods, services and facilities

- In a 2001 survey of disabled people, 16 per cent had difficulty going shopping, 10 per cent going to a cinema, pub or restaurant. The proportions with difficulty accessing goods and services had changed little since 1996.

Indicator: Access for disabled people (continued)

J3

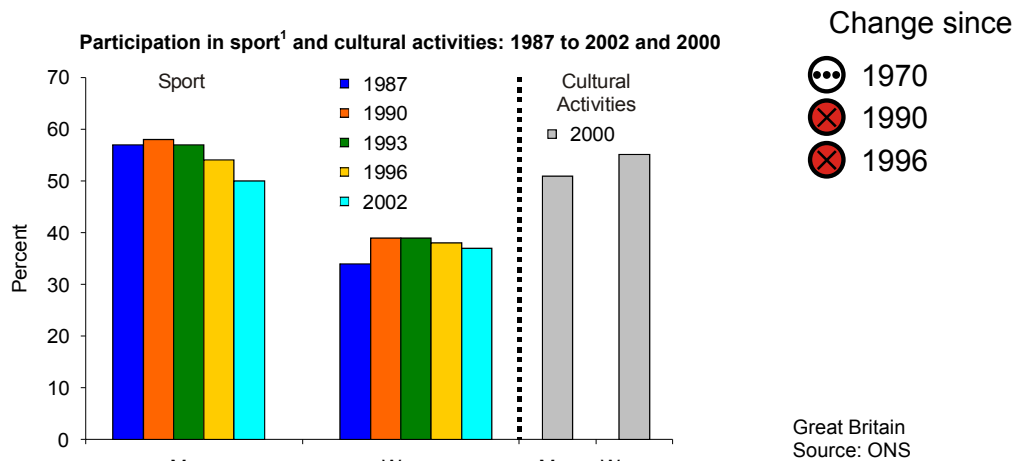


Objective: Ensure that disabled people have access to a wider range of goods, services and facilities

- Of those disabled people having particular difficulties accessing goods and services in 2001, 27 per cent had difficulty getting there (down 5 percentage points since 1996), 19 per cent had difficulties getting around the place and 15 per cent had difficulties getting into the place. There were improvements in facilities, communication and information compared with 1996.

Indicator: Participation in sport and cultural activities

J4



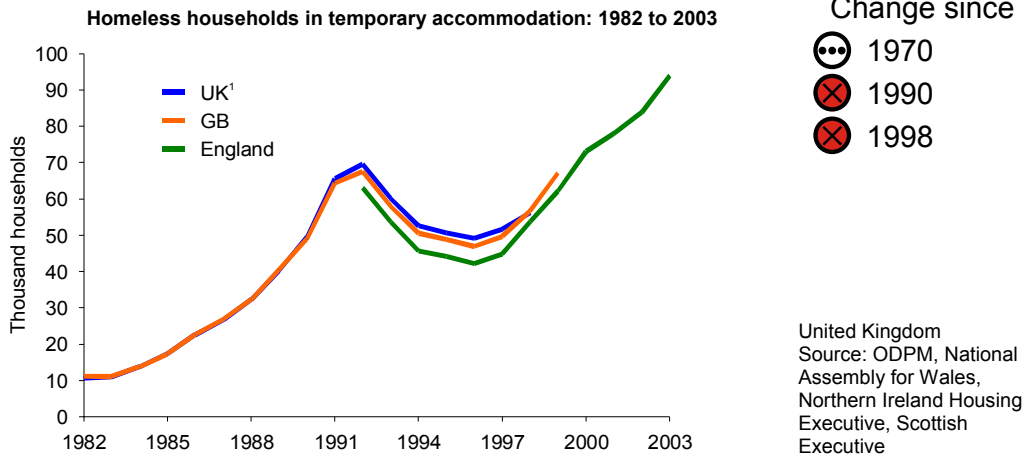
Note: 1. People aged 16 and over participating in at least one activity (excluding walking) in a 4-week period.

Objective: Arts and sport should be accessible to everyone

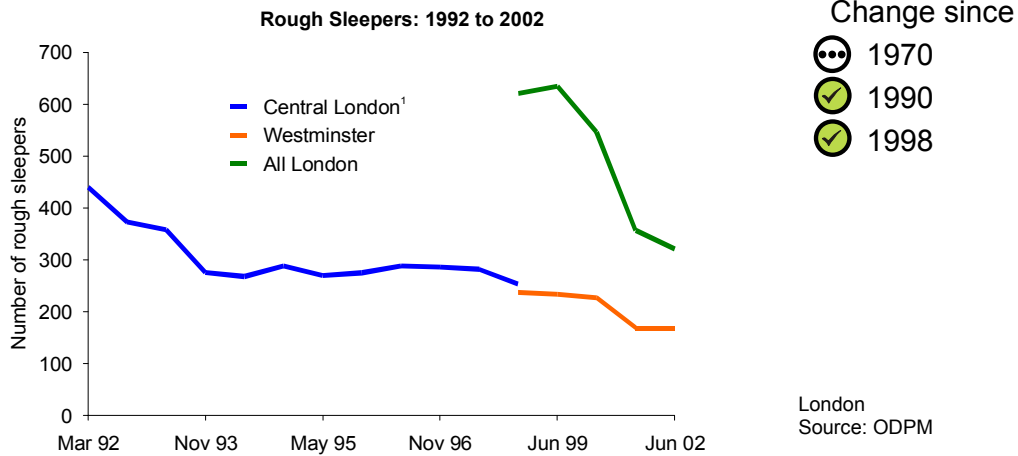
- Participation in sport and games decreased between 1990 and 2002 among men, with relatively little change for women. However, a difference in participation rates between men (50 per cent in 2002) and women (37 per cent in 2002) remained.
- Data on cultural activities from the 2000 Time Use Survey show the opposite gender split, with 55 per cent of women and 51 per cent of men participating, although the difference is smaller than for sports.

**Indicator: Temporary accommodation/
Rough sleepers**

J5



Note: 1. Northern Ireland data available from 1990 only



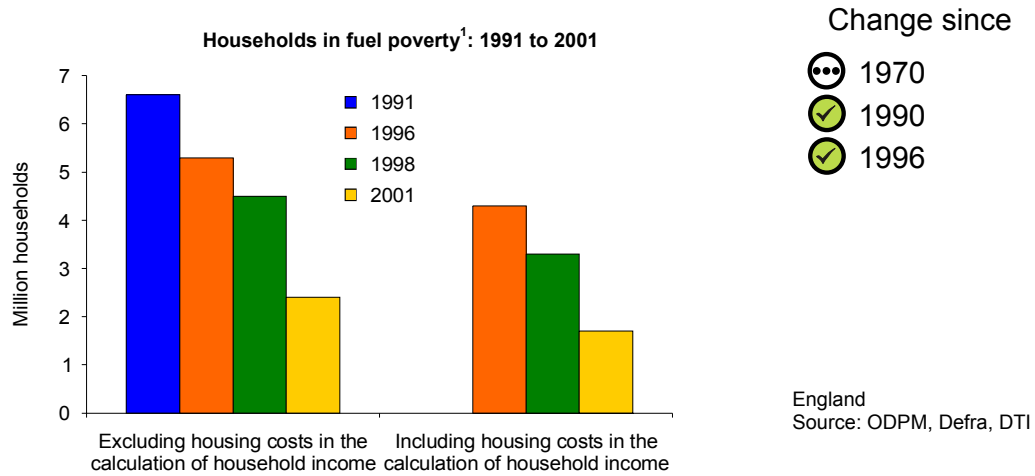
Note: 1. Selected areas of Central London only (west End, Victoria, Waterloo, and South Camden).

Objective: Ensure that everyone has the opportunity of a decent home

- The number of households in temporary accommodation in England in 2003 was 94,000, having risen by 40,000 since 1998, and 31,000 since 1992.
- In 1992 there were 254 rough sleepers in selected areas of Central London. The number of rough sleepers in the whole of London has fallen from 621 in 1998 to 267 in 2003.

Indicator: Fuel poverty

J6



Note: 1. Households are fuel poor if they need to spend more than 10 per cent of their income to keep warm

Objective: Improving significantly the energy efficiency of all residential accommodation

- In 2001, 1.7 million households in England were ‘fuel poor’, needing to spend more than 10 per cent of their income on fuel to keep warm.
- The number of fuel poor households fell by around 60 per cent between 1996 and 2001.